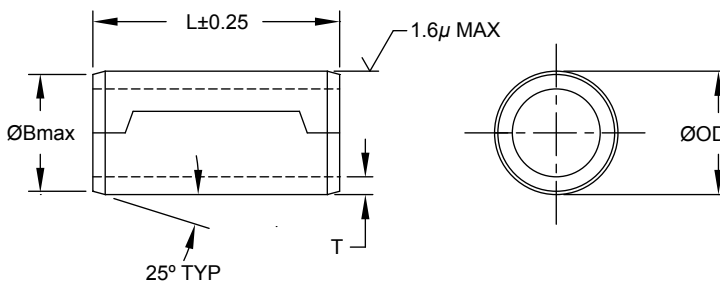


SPIROL®

GROUND HOLLOW DOWELS

Design-in SPIROL's Series GD100 Ground Hollow Dowels for Precision Alignment and Substantial Cost Savings.

SPIROL Ground Hollow Dowels are designed to be direct replacements for standard Ground Solid Dowels per ISO 8734. They are used where centerline tolerancing and precision alignment are required.



- Precision ground outside diameters maintain critical alignment within 20µm.
- A 1.6µm surface finish and well-defined chamfers prevent shaving or scraping during installation.
- The roll-formed design yields substantial cost savings over Solid Dowels.
- The hollow feature offers weight savings over Solid Dowels and clearance for bolts, fluids, or gases.

TECHNICAL SPECIFICATIONS

STANDARD MATERIAL	STANDARD FINISH
F Low Carbon Steel	K Plain, Oiled

NOMINAL DIAMETER	ØOD (m6)		WALL THICKNESS T	ØB MAX.	RECOMMENDED Ø HOLE SIZE ¹ (M7)		RECOMMENDED Ø HOLE SIZE ² (H7)	
	MIN.	MAX.			MIN.	MAX.	MIN.	MAX.
6	6.004	6.012	0.9	5.80	5.988	6.000	6.000	6.012
8	8.006	8.015	1.2	7.80	7.985	8.000	8.000	8.015
10	10.006	10.015	1.6	9.75	9.985	10.000	10.000	10.015
12	12.007	12.018	1.8	11.75	11.982	12.000	12.000	12.018
16	16.007	16.018	2.2	15.70	15.982	16.000	16.000	16.018

NOMINAL DIAMETER	LENGTH							
	6	8	10	12	15	20	25	30
6								
8								
10								
12								
16								

- Maximum recommended interference fit for primary retention of Dowel.
 - Recommended transitional fit in mating component.
- All dimensions in millimeters.
 - T refers to strip thickness prior to forming & grinding.
 - Refer to ISO 286 for dimensional and fit specifications.
 - Special lengths and sizes available upon request.

To Order: GHDL, Nominal Dowel Size x Length, Material, Finish, Series
Example: GHDL 8 x 15 FK GD100

Europe

SPIROL United Kingdom
17 Princewood Road
Corby, Northants
NN17 4ET United Kingdom
Tel. +44 1536 444800
Fax. +44 1536 203415

SPIROL France
Cit  de l'Automobile ZAC Croix Blandin
18 Rue L na Bernstein
51100 Reims, France
Tel. +33 3 26 36 31 42
Fax. +33 3 26 09 19 76

SPIROL Germany
Ottostr. 4
80333 Munich, Germany
Tel. +49 89 4 111 905 71
Fax. +49 89 4 111 905 72

SPIROL Spain
08940 Cornell  de Llobregat
Barcelona, Spain
Tel. +34 93 669 31 78
Fax. +34 93 193 25 43

SPIROL Czech Republic
Sokola T my 743/16
Ostrava-Mari nsk  Hory 70900
Czech Republic
Tel/Fax. +420 417 537 979

SPIROL Poland
ul. Solec 38 lok. 10
00-394, Warszawa, Poland
Tel. +48 71 399 44 55

Americas

SPIROL International Corporation
30 Rock Avenue
Danielson, Connecticut 06239 U.S.A.
Tel. +1 860 774 8571
Fax. +1 860 774 2048

SPIROL Shim Division
321 Remington Road
Stow, Ohio 44224 U.S.A.
Tel. +1 330 920 3655
Fax. +1 330 920 3659

SPIROL Canada
3103 St. Etienne Boulevard
Windsor, Ontario N8W 5B1 Canada
Tel. +1 519 974 3334
Fax. +1 519 974 6550

SPIROL Mexico
Avenida Avante #250
Parque Industrial Avante Apodaca
Apodaca, N.L. 66607 Mexico
Tel. +52 81 8385 4390
Fax. +52 81 8385 4391

SPIROL Brazil
Rua Mafalda Barnab  Soliane, 134
Comercial Vit ria Martini, Distrito Industrial
CEP 13347-610, Indaiatuba, SP, Brazil
Tel. +55 19 3936 2701
Fax. +55 19 3936 7121

**Asia
Pacific**

SPIROL Asia Headquarters
1st Floor, Building 22, Plot D9, District D
No. 122 HeDan Road
Wai Gao Qiao Free Trade Zone
Shanghai, China 200131
Tel. +86 21 5046 1451
Fax. +86 21 5046 1540

SPIROL Korea
160-5 Seokchon-Dong
Songpa-gu, Seoul, 138-844, Korea
Tel. +86 21 5046-1451
Fax. +86 21 5046-1540

email: info-uk@spirol.com



An OEM was using a 16mm OD Ground Solid Dowel to locate the transmission to the back of the engine. This particular application was more demanding than most due to the weight of the two components to be aligned and the method of joining them together. The customer approached **SPIROL** for cost-reduction suggestions.

SPIROL's Series GD100 Ground Hollow Dowels offered a perfect solution for this application. The standard M16 diameter fit the existing hole size and was easily incorporated into the assembly equipment and fixtures without modification. The customer was able to attain a 30% cost savings, and the function of the assembly remained consistent with the previous product.



To validate your design, **SPIROL** Application Engineers will review your application needs and work with your design team to recommend the best solution. One way to start the process is to select **Alignment Applications** in our **Optimal Application Engineering** portal at www.SPIROL.co.uk.