

# SPIROL®

## TWIST-LOK™ PINS

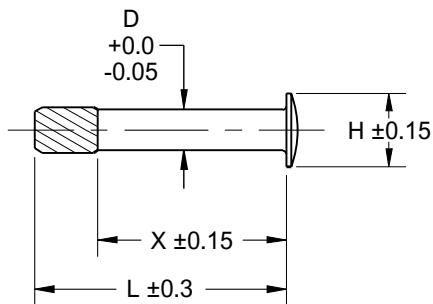
### SPIROL® Series RH600 Pins

**Twist-Lok™ Pins** replace costly screw machined pins and eliminate problematic installation of screws and rivets.

The helical knurl minimises stress during installation by rotating as it engages the hinge.

Corrosion-resistant material and a rounded burr-free head improve installed appearance.

Axial and radial forces induced in the hinge eliminate the tendency for the pin to creep and maintain hinge tension.



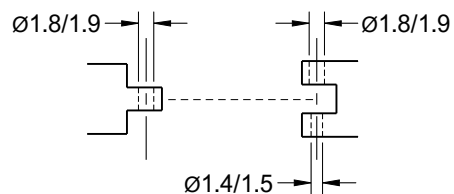
#### DIMENSIONAL DATA — METRIC

Diameter D	Head Diameter H	Length L	Length X
1.60	2.85	6	4.5
		8	6
		10	7.5
<b>STANDARD MATERIAL:</b> Nickel Silver UNS C75200 / CuNi18Zn20 (N)			

Series RH600 Twist-Lok™ Pins are made to order.

C75200 Nickel Silver is a copper alloy that is used for lightly loaded applications where cosmetic finish and corrosion resistance are important. This material is easy to work with and is a cost effective alternative to austenitic stainless steel or plating.

#### RECOMMENDED HOLE SIZE



**To Order:** SLDP (Pin Size)x(Length)(Material)(Finish)(Series)  
**Example:** SLDP 1.60 x 8 NK RH600

**Contact SPIROL for Design Assistance!**  
[www.SPIROL.com/technical-support](http://www.SPIROL.com/technical-support)



### Technical Centres

**Europe** **SPIROL United Kingdom**  
17 Princewood Road  
Corby, Northants  
NN17 4ET United Kingdom  
Tel: +44 (0) 1536 444800  
Fax: +44 (0) 1536 203415

**SPIROL France**  
Cité de l'Automobile ZAC Croix Blandin  
18 Rue Léna Bernstein  
51100 Reims, France  
Tel: +33 (0) 3 26 36 31 42  
Fax: +33 (0) 3 26 09 19 76

**SPIROL Germany**  
Ottostr. 4  
80333 Munich, Germany  
Tel: +49 (0) 89 4 111 905 71  
Fax: +49 (0) 89 4 111 905 72

**SPIROL Spain**  
Plantes 3 i 4  
Gran Via de Carles III, 84  
08028, Barcelona, Spain  
Tel/Fax: +34 932 71 64 28

**SPIROL Czech Republic**  
Evropská 2588 / 33a  
160 00 Prague 6-Dejvice  
Czech Republic  
Tel: +420 226 218 935

**SPIROL Poland**  
ul. Solec 38 lok. 10  
00-394, Warsaw, Poland  
Tel. +48 510 039 345

**Americas** **SPIROL International Corporation**  
30 Rock Avenue  
Danielson, Connecticut 06239 U.S.A.  
Tel. +1 860 774 8571  
Fax. +1 860 774 2048

**SPIROL Shim Division**  
321 Remington Road  
Stow, Ohio 44224 U.S.A.  
Tel. +1 330 920 3655  
Fax. +1 330 920 3659

**SPIROL Canada**  
3103 St. Etienne Boulevard  
Windsor, Ontario N8W 5B1 Canada  
Tel. +1 519 974 3334  
Fax. +1 519 974 6550

**SPIROL Mexico**  
Avenida Avante #250  
Parque Industrial Avante Apodaca  
Apodaca, N.L. 66607 Mexico  
Tel. +52 81 8385 4390  
Fax. +52 81 8385 4391

**SPIROL Brazil**  
Rua Mafalda Barnabé Soliane, 134  
Comercial Vitória Martini,  
Distrito Industrial,  
CEP 13347-610, Indaiatuba, SP, Brazil  
Tel. +55 19 3936 2701  
Fax. +55 19 3936 7121

**Asia Pacific** **SPIROL Asia Headquarters**  
1st Floor, Building 22, Plot D9, District D  
No. 122 HeDan Road  
Wai Gao Qiao Free Trade Zone  
Shanghai, China 200131  
Tel: +86 (0) 21 5046-1451  
Fax: +86 (0) 21 5046-1540

**SPIROL Korea**  
16th Floor, 396 Seocho-daero,  
Seocho-gu, Seoul, 06619, South Korea  
Tel: +82 (0) 10 9429 1451

e-mail: [info-uk@spirol.com](mailto:info-uk@spirol.com)

**SPIROL.co.uk**



Coiled Spring Pins



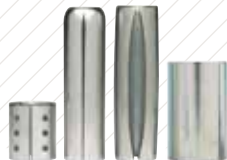
Slotted Spring Pins



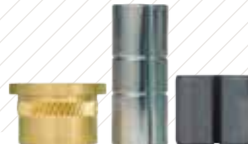
Solid Pins



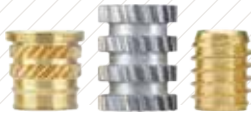
Alignment Dowels /  
Bushings



Spacers & Rolled  
Tubular Components



Compression  
Limiters



Threaded Inserts  
for Plastics



Railroad Nuts



Disc Springs



Precision Shims &  
Thin Metal Stampings



Precision Washers



Parts Feeding  
Technology



Pin Installation  
Technology



Insert Installation  
Technology



Compression Limiter  
Installation Technology

Please refer to [www.SPIROL.co.uk](http://www.SPIROL.co.uk) for current specifications and standard product offerings.

SPIROL offers complimentary Application Engineering support! We will assist on new designs as well as help resolve issues, and recommend cost savings on existing designs. Let us help by visiting **Application Engineering Services** on [SPIROL.co.uk](http://SPIROL.co.uk).